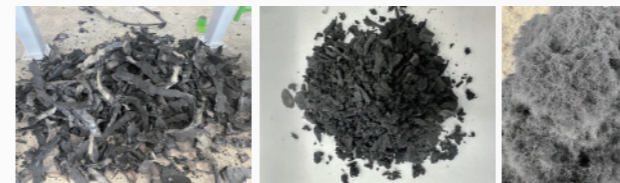




废旧轮胎回收线 Waste Tyre recycling line



如有技术改动，恕不另行通知。瑞莱格保留一切解释权。We reserve the right to make technical changes without prior announcement. All rights reserved.



无锡瑞莱格机械有限公司
WUXI RITECH MACHINERY CO.,LTD
无锡市惠山区前洲街道前石路332号,
No.332,Qianshi Road,Qianzhou Town,
Huishan District,Wuxi City,
Jiangsu Province, China.

T. +86 187 5157 3031
E. leo@ritech-recycling.com
chinalexu@126.com
W. www.ritech-recycling.com

www.ritech-recycling.com

无锡瑞莱格机械有限公司
WUXI RITECH MACHINERY CO.,LTD

废旧轮胎回收线

Waste Tyre recycling line

技术特点 Technical features

- ❶ 双轴破碎机具有低速高扭矩特点，能在不去除轮胎钢圈的情况下，将废旧轮胎预撕碎成 50-300mm 碎片。
The double-shaft shredder has the characteristics of low-speed and high-torque, which can pre-shred waste tyres into 50-300mm strips without removing the tyres ring steel.
- ❷ 经钢丝分离机处理后的钢丝与轮胎橡胶完全分离。通过横跨式磁选机将钢丝从橡胶中拣出来。高强度磁力配合耐磨材质皮带，使钢丝与橡胶分离达到近乎完美的效果。
The steel wire processed by the single shaft shredder is completely separated from the tyre rubber. The steel wire is picked out of the rubber through magnetic separator. The high-strength magnetic and the wear-resistant rubber belt makes the separation of steel wire and rubber almost perfect.
- ❸ 破碎机配备独特的设计刀辊，有利于轮胎橡胶的进一步破碎。开放式和水冷设计便于机器散热和减少粉尘。橡胶的尺寸可通过更换筛网控制。
The crusher is equipped with a uniquely designed rotor, which is good to the further crushing of tire rubber. The open and water cooled design is convenient for the machine to dissipate heat and reduce dust. The size of the rubber can be controlled by replacing the screen.

- ❹ Z 型分选机能分离橡胶颗粒中的纤维物料。Z 型分选机下方配备磁选筒，分离残留钢丝，保证橡胶颗粒的纯度。该系统与脉冲除尘装置相连，在分选过程中同时去除粉尘。
The Zig-zag sorting machine can separate the fiber materials in the rubber particles. The Zig-zag sorting machine is equipped with a magnetic sorting roller to separate the residual steel wire and ensure the purity of the rubber particles.
- ❺ 中央除尘系统通过气管收集轮胎线破碎过程中产生的灰尘和纤维。
The central dust collection system can remove dust and fiber at the same time during the sorting process.
- ❻ 电控柜的配备实现轮胎线操作自动化，触控屏幕操作使整线编程，维修和检修变得便利。客户可选择软启动或变频器实现平稳启动。
The electric control cabinet realizes the automation of tire line operation, and the touch screen operation makes the whole line programming, maintenance and check convenient. Customers can choose soft start or frequency converter to achieves smooth start-up.

应用范围 Scope of application

- 轿车胎
Car tyres
- 卡车胎
Truck tyres
- 工程车轮胎
Engineering car tires

生产工艺流程 Flow chart

